



# Obesity and Fat Metabolism in Human Immunodeficiency Virus–Infected Individuals: Immunopathogenic Mechanisms and Clinical Implications

Allison Eckard, Andrew Bremer, Caroline Apovian, Catherine Godfrey, Clovis Palmer, Diana Alba, Dorothy Lewis, Grace A McComsey, Janet Lo, Janine Trevillyan, John R Koethe, Steven Grinspoon, Suman Srinivasa, Suneil Koliwad



You've relied on CD4 counts to assess the co-infection risk of your HIV patients. Now, it counts more than ever.

[See how we can help >](#) 

# Obesity and Fat Metabolism in Human Immunodeficiency Virus–Infected Individuals: Immunopathogenic Mechanisms and Clinical Implications

Catherine Godfrey,<sup>1,2</sup> Andrew Bremer,<sup>2</sup> Diana Alba,<sup>3</sup> Caroline Apovian,<sup>4</sup> John R. Koethe,<sup>5</sup> Suneil Koliwad,<sup>3</sup> Dorothy Lewis,<sup>6</sup> Janet Lo,<sup>7</sup> Grace A. McComsey,<sup>8</sup> Allison Eckard,<sup>9</sup> Suman Srinivasa,<sup>7</sup> Janine Trevillyan,<sup>10</sup> Clovis Palmer,<sup>11</sup> and Steven Grinspoon<sup>7</sup>

<sup>1</sup>National Institute of Allergy and Infectious Diseases, and <sup>2</sup>National Institute of Diabetes and Digestive and Kidney Diseases, National Institutes of Health, Bethesda, Maryland; <sup>3</sup>University of California, San Francisco School of Medicine; <sup>4</sup>Boston Medical Center and Boston University School of Medicine, Massachusetts; <sup>5</sup>Vanderbilt University, Nashville, Tennessee; <sup>6</sup>McGovern Medical School, University of Texas Health Science Center at Houston; <sup>7</sup>Massachusetts General Hospital and Harvard Medical School, Boston; <sup>8</sup>University Hospitals Cleveland Medical Center and Case Western Reserve, Ohio; <sup>9</sup>Medical University of South Carolina, Charleston; and <sup>10</sup>Monash University, Clayton, and <sup>11</sup>Burnet Institute, Melbourne, Victoria, Australia

Metabolic complications relating to complex effects of viral and immune-mediated mechanisms are now a focus of clinical care among persons living with human immunodeficiency virus (PLHIV), and obesity is emerging as a critical problem. To address knowledge gaps, the US National Institutes of Health sponsored a symposium in May 2018 entitled “Obesity and Fat Metabolism in HIV-infected Individuals.” Mechanisms relating to adipose dysfunction and fibrosis, immune function, inflammation, and gastrointestinal integrity were highlighted as contributors to obesity among PLHIV. Fibrotic subcutaneous adipose tissue is metabolically dysfunctional and loses its capacity to expand, leading to fat redistribution, including visceral obesity and ectopic fat accumulation, promoting insulin resistance. Viral proteins, including viral protein R and negative regulatory factor, have effects on adipogenic pathways and cellular metabolism in resident macrophages and T cells. HIV also affects immune cell trafficking into the adipose compartments, with effects on adipogenesis, lipolysis, and ectopic fat accumulation. Key cellular metabolic functions are likely to be affected in PLHIV by gut-derived cytokines and altered microbiota. There are limited strategies to reduce obesity specifically in PLHIV. Enhancing our understanding of critical pathogenic mechanisms will enable the development of novel therapeutics that may normalize adipose tissue function and distribution, reduce inflammation, and improve insulin sensitivity in PLHIV.

**Keywords.** HIV; obesity; viral proteins; inflammation; metabolism.

Obesity is emerging as a critical problem in people living with human immunodeficiency virus (PLHIV) in both resource-poor and resource-rich environments, with women more affected than men [1, 2] (Table 1). Obesity is associated with adipose tissue dysfunction in ways that promote insulin resistance and lipid abnormalities. Increased body mass index (BMI) is specifically associated with the development of cardiovascular disease, non-AIDS-related cancers, and type 2 diabetes in PLHIV [3]. Indeed, weight gain in PLHIV is more highly associated with these conditions than in the general population; every 5-pound gain is associated with a 14% increased risk for diabetes compared with only 8% in the general population [4]. With dramatic improvements in antiretroviral therapy (ART), noncommunicable diseases are now contributors to

human immunodeficiency virus (HIV)–associated morbidity and mortality [3] and may in part be due to immune activation that persists despite effective HIV treatment. White adipose tissue (WAT) contains thermogenic adipocytes, often termed “beige,” that are highly metabolically active and associated with leanness, as well as lipid-storing white adipocytes that are also critical metabolic regulators. Among individuals without HIV, obesity may contribute to a low-grade inflammatory state (metabolic inflammation), characterized by recruitment of immune cells into adipose tissue and secretion of adipocytokines. Among PLHIV, increased metabolic inflammation may significantly alter beige and white adipocyte function, producing critical health risks. Recognizing these converging factors, the National Institutes of Health sponsored a symposium in May 2018 entitled “Obesity and Fat Metabolism in HIV-Infected Individuals.” This report describes selected topics discussed at that meeting highlighting the biological basis of obesity in HIV.

## ADIPOSE TISSUE FIBROSIS AND ECTOPIC VISCERAL ADIPOSE TISSUE IN HIV

Obesity is characterized by expansion of both subcutaneous and intra-abdominal (visceral) fat (Figure 1). However, insulin resistance and increased cardiometabolic risk are associated

Received 31 December 2018; editorial decision 8 March 2019; accepted 22 March 2019; published online March 20, 2019.

Presented in part: Obesity and Fat Metabolism in HIV-Infected Individuals symposium, National Institutes of Health, May 2018.

Correspondence: C. Godfrey, MD, National Institutes of Health, National Institute of Allergy and Infectious Diseases, 5601 Fishers Lane, Bethesda, MD 20892 (cgodfrey@niaid.nih.gov).

The Journal of Infectious Diseases® 2019;220:420–31

Published by Oxford University Press for the Infectious Diseases Society of America 2019. This work is written by (a) US Government employee(s) and is in the public domain in the US. DOI: 10.1093/infdis/jiz118

**Table 1. Reported Prevalence of Obesity in People With Human Immunodeficiency Virus, by Region**

Author (Year)	Country	Population	No.	Male, No. (%)	Age <sup>a</sup>	ART, No. (%)	Obesity, No. (%)	Overweight, No. (%)
<b>Africa</b>								
WHO region estimate, %	...	...	...	...	...	...	10.6%	27.7%
Semu et al (2016)	Tanzania	PLHIV enrolled in care	53 825	16 685 (31)	35	6503 (12)	3840 (7.1)	9890 (18.3)
Julius et al (2011)	South Africa	HIV outpatient clinic	304	67 (22)	>35	...	51 (16.8)	88 (29.0)
Ezechi et al (2016)	Nigeria	Cohort study	8819	3157 (35.8)	35.5	...	668 (7.4)	1664 (19.7)
							2337 (26.5) <sup>b</sup>	3148 (35.7) <sup>b</sup>
Muyanja et al (2016)	Uganda	PLHIV on nonnucleoside ART	250	80 (32)	36	250 (100)	30 (12)	57 (22.8)
Guehi et al (2016)	Cote d'Ivoire	Temprano Trial	597	150 (25)	36	597 (100)	55 (9.2) <sup>c</sup>	148 (24.8) <sup>c</sup>
Malaza et al (2012)	South Africa	Population-based survey	1945	...	...	369 (19)	390 (20)	504 (26)
<b>Europe</b>								
WHO region estimate, %	...	...	...	...	...	...	23.3%	62.3%
Obry-Roguet et al (2018)	France	HIV outpatient clinic	862	585 (67.9)	51.2	787 (91)	46 (5.3)	191 (22.2)
Pourcher et al (2015)	France	French Hospital Database on HIV	37 505	25 128 (67)	>40	32 629 (87)	3169 (8.4)	12 701 (33.8)
Ilozue et al (2017)	England	PLHIV in outpatient care	560	385 (68.8)	45	507 (90.5)	145 (25.8)	217 (38.7)
<b>North America</b>								
WHO US estimate, %	...	...	...	...	...	...	36.2%	70.2%
Thompson-Paul et al (2015)	US	PLHIV in outpatient care	4006	2941 (73.2)	>40	3366 (84)	1023 (25.5)	...
Arbeitman et al (2014)	US	Youth with perinatally acquired HIV	134	64 (48)	16.5	120 (90)	30 (22)	18 (13.4)
Blashill et al (2013)	US	MSM with HIV (CNICS)	864	864 (100)	44	864 (100)	107 (12)	363 (42)
Messina et al (2014)	Canada	HIV outpatient clinic	886	797 (90)	47	788 (89)	116 (14)	294 (34)
Taylor et al (2014)	US	South Texas HIV Cohort	1214	968 (79.7)	42	1170 (96.4)	268 (22.1)	455 (37.5)
Koethe et al (2016)	US/Canada	Nationwide cohort (NA-ACCORD)	14 084	11 690 (83)	40	0 (0)	2096 (14.8)	4275 (30.3)
Crum-Cianflone et al (2010)	US	US Military natural history study	1682	1564 (93)	31	0 (0)	157 (9.3)	623 (37)
Crum-Cianflone et al (2008)	US	US Military	661	661 (100)	41	479 (72.5)	112 (17)	304 (46)
Boodram et al (2009)	US	Prospective cohort study (WHIS)	2157	0 (0)	36	1304 (60)	240 (33)	205 (28)
Becofsky et al (2016)	US	HIV outpatient clinic/hospital	1489	1047 (70)	48	1241 (85.2)	420 (28.8)	553 (37.9)
<b>South America</b>								
WHO Brazilian estimate, %	...	...	...	...	...	...	22.1%	56.9%
Bakal et al (2018)	Brazil	HIV outpatient clinic	1794	1100 (61.3)	36	0 (0)	141 (7.9)	390 (22)
Kroll et al (2012)	Brazil	HIV outpatient clinic	354	203 (57.3)	43	268 (75.9)	30 (8.4)	121 (34.2)

Results extrapolated from data stratified by subgroups or presented only as percentages where necessary. Obesity defined as body mass index (BMI)  $\geq 30$  kg/m<sup>2</sup> and overweight as BMI 25–29.9 kg/m<sup>2</sup>. WHO estimates drawn from the Global Health Observatory (2017); available at: <http://apps.who.int/gho/data/node.main.A896?lang=en>.

References: Arbeitman et al (J Pediatr Gastroenterol Nutr. 2014;59:449–54); Bakal et al (J Antimicrob Chemother. 2018;73:2177–85); Becofsky et al (Obes Sci Pract. 2016;2:123–7); Blashill et al (J Int Assoc Provid AIDS Care. 2013;12:319–24); Boodram et al (AIDS Patient Care STDS. 2009;23:1009–16); Crum-Cianflone et al (PLoS One. 2010;5:e10106); Crum-Cianflone et al (AIDS Patient Care STDS. 2008;22:325–30); Ezechi et al (Ceylon Med J. 2016;61:56–62); Guehi et al (AIDS Res Ther. 2016;13:12); Ilozue et al (Int J STD AIDS. 2017;28:284–9); Julius et al (Curr HIV Res. 2011;9:247–52); Koethe et al (AIDS Res Hum Retroviruses. 2016;32:50–8); Kroll et al (Arq Bras Endocrinol Metabol. 2012;56:137–41); Malaza et al (PLoS One. 2012;7:e47761); Messina et al (J Assoc Nurses AIDS Care. 2014;25:652–6); Muyanja et al (AIDS Patient Care STDS. 2016;30:4–10); Obry-Roguet et al (Medicine (Baltimore). 2018;97:e10956); Pourcher et al (J Visc Surg. 2015;152:33–7); Semu et al (J Int Assoc Provid AIDS Care. 2016;15:512–21); Taylor et al (J Acquir Immune Defic Syndr. 2014;65:e33–40); Thompson-Paul et al (Medicine (Baltimore). 2015;94:e1081).

Abbreviations: ART, antiretroviral therapy; CNICS, Centers for AIDS Research Network of Integrated Clinical Systems; HIV, human immunodeficiency virus; MSM, men who have sex with men; NA-ACCORD, North American AIDS Cohort Collaboration on Research and Design; PLHIV, people living with HIV; US, United States; WHIS, Women's Interagency HIV Study; WHO, World Health Organization.

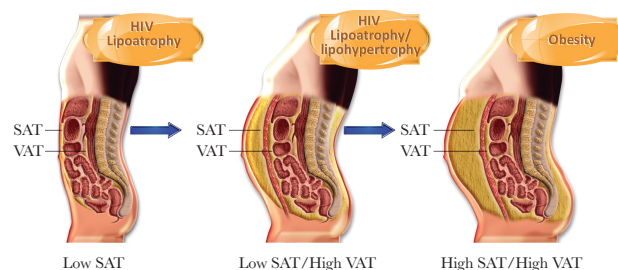
<sup>a</sup>Mean or median as reported, or >x years when  $\geq 50\%$  of population was reported to be over that age.

<sup>b</sup>Obesity/overweight prevalences following 5 years of ART.

<sup>c</sup>Prevalence at 24-month follow-up visit for the participants randomized to immediate ART.

with WAT inflammation and reduced thermogenesis, changes that are closely linked to visceral obesity [5]. Therefore, efforts are ongoing to identify what drives visceral fat expansion. Data also show that WAT fibrosis is associated with insulin resistance and diabetes [6–8]. Specifically, recent work shows that people with subcutaneous WAT (scWAT) fibrosis have more fibroadipogenic precursors in the scWAT that express platelet-derived growth factor receptors and CD9/Tetraspanin27 and that differentiate into adipocytes capable of producing collagen and promoting extracellular matrix deposition [9].

Healthy scWAT shrinks as it releases fatty acids to the body during fasting or starvation. However, it has the capacity



**Figure 1.** Spectrum of body composition changes past, present, and future in human immunodeficiency virus (HIV). Fat dysfunction in HIV related to loss of subcutaneous adipose tissue (SAT) or lipoatrophy, gain of visceral adipose tissue (VAT) or lipohypertrophy, and gain of SAT and VAT in obesity.

to rapidly reexpand when food intake resumes. scWAT fibrosis limits this dynamic plasticity, essential for metabolic adaptability. In the current obesogenic food environment, fibrosis can limit scWAT expansion and promote fat deposition in other depots, including the visceral WAT (vWAT). The role of scWAT fibrosis in promoting insulin resistance is supported by both mouse models and human studies, including ethnic comparisons across a wide range of visceral adiposity [10–14]. Although some observational studies suggest that PLHIV develop more scWAT fibrosis than uninfected people, especially in the context of lipodystrophy [15], it is unknown whether fibrosis drives insulin resistance in this setting.

The vWAT expands when the capacity for scWAT expansion is exceeded [16, 17]. Lipids may then infiltrate the liver and other nonadipose organs with clinical consequences. Imaging studies link such ectopic fat deposition to insulin resistance and cardiometabolic disease. Epicardial and perivascular fat, for example, are increased in those with chronic HIV, and expansion of each is implicated in heightened cardiometabolic risk [18].

### REGULATION OF ADIPOGENESIS BY HIV

HIV produces accessory proteins that control replication and influence adipocyte and T-cell metabolism. The most comprehensively studied viral proteins are viral protein R (Vpr) and negative regulatory factor (Nef). Vpr circulates in the blood even in those with undetectable viral loads [19]. In animal models, with transgenic overexpression or systemic infusion, Vpr blocks preadipocyte differentiation and peroxisome proliferator-activated receptor gamma (PPAR- $\gamma$ ) expression, while simultaneously stimulating the glucocorticoid receptor in adipocytes and inhibiting PPAR- $\gamma$  in hepatocytes [20], resulting

in increased lipolysis, hyperglycemia, hypertriglyceridemia, and hepatic steatosis [20].

The viral accessory proteins may also regulate metabolism by controlling gene transcription via Dicer, a cytoplasmic type III RNase that cleaves pre-microRNAs into mature microRNAs. HIV reduces Dicer and enhances infectivity by altering microRNA expression important to host defenses. Simultaneously, reduction of Dicer by HIV accessory proteins may reduce microRNAs that maintain adipose differentiation. Animal knockout models of Dicer demonstrate lipodystrophy; loss of scWAT, including metabolically favorable beige cells; adipocyte senescence; and increased dorsocervical fat [22]. These changes are associated with insulin resistance [22], similar to PLHIV. Among PLHIV, particularly those with lipodystrophy, marked by clinical evidence of dorsocervical fullness and lipohypertrophy, there is reduced Dicer expression in the scWAT when compared to age-matched controls (Figure 2). Reduced Dicer expression is also associated with lower levels of thermogenic fat markers in HIV, suggesting a linkage of the virus, through Dicer, to dysfunctional adipose tissue [23]. Among PLHIV, reduced Dicer expression and abdominal subcutaneous adipose tissue dysfunction are associated with increased dorsocervical fat [23]. Increased dorsocervical fat in HIV is characterized by increased DIO2, a deiodinase that contributes to thermogenesis in beige fat, as well as increased energy expenditure [24]. Dorsocervical fat accumulation may therefore increase to compensate for generalized subcutaneous adipose dysfunction. Taken together, these data suggest that HIV and its related proteins may potentially affect critical adipogenic pathways controlling energy expenditure and lipid metabolism contributing to metabolic dysfunction. Further studies are needed to assess these affects among those achieving



**Figure 2.** Human immunodeficiency virus (HIV)/viral protein effects on adipose-specific Dicer, and implications of Dicer expression to lipodystrophy in preclinical and human models. *A*, Potential mechanism of HIV and viral accessory protein-mediated suppression of Dicer leading to microRNA dysregulation and fat dysfunction in brown adipose tissue and the epididymal and inguinal adipose depots [21]. *B*, Adipose-specific knockout mice demonstrate a lipodystrophy phenotype compared to control mice. Arrow depicts dorsocervical fullness and arrowheads depict loss of subcutaneous adipose tissue [22]; *C*, Significant reduction in Dicer expression in abdominal subcutaneous adipose tissue, with a stepwise decrease in expression demonstrated to be highest among non-HIV-infected individuals and most reduced among HIV-infected individuals with lipodystrophy [23]. Figures adapted and used with permission [21–23]. Abbreviations: AU, arbitrary units; BAT, brown adipose tissue; Epi, epididymal; HIV, human immunodeficiency virus; Ing, inguinal; KO, knockout; Lipo, lipodystrophy; mRNA, messenger RNA; TBP, TATA-box binding protein; Vpr, viral protein R.

virological suppression with undetectable virus and low circulating concentrations of accessory proteins.

### **IMMUNOLOGICAL PHENOTYPE OF ADIPOSE TISSUE: RESIDENT T CELLS AND MACROPHAGES**

WAT represents a complex immunologic environment comprised of cells of the adaptive and innate lineages, which serve to identify and eliminate a range of infiltrating viruses and other pathogens, with subsequent effects on adipocyte regulation and energy storage and release. A central feature of the WAT immunologic milieu in HIV, and in simian immunodeficiency virus (SIV) infections in macaques, is a profound shift in WAT T-cell profile toward a CD8<sup>+</sup> T-cell predominance [25–27]. WAT T cells in PLHIV primarily have a CD45RO<sup>+</sup> memory phenotype with high levels of CD69 expression, an inducible early-activation indicator [28], and have high expression of CD57 on CD8<sup>+</sup> T cells, a marker of late differentiation and senescence and reduced replicative capacity [29, 30].

The finding that WAT from lean PLHIV and SIV-infected macaques is enriched for CD8<sup>+</sup> T cells is intriguing as similar changes are a hallmark of obesity. Obese HIV-negative individuals have increased adipose tissue CD8<sup>+</sup> T cells, CD4<sup>+</sup> Th1 cells, and Th17 cells; fewer Treg cells; and an increase in M1-phenotype (CD68<sup>+</sup>, tumor necrosis factor [TNF]  $\alpha$ , interleukin [IL] 12, and IL-23-producing) proinflammatory macrophages [31–34]. In mice, progressive obesity is also accompanied by increased WAT T-cell clonality [35–37]. Furthermore, WAT CD8<sup>+</sup> T-cell infiltration is an early and necessary factor for the recruitment of TNF- $\alpha$ , IL-6, and IL-12-producing macrophages in obesity [31]. IL-6, TNF- $\alpha$ , and other cytokines exert their effects via adipocyte surface receptors and other mechanisms to impair insulin signaling through reduced expression of insulin receptor substrate 1, phosphoinositide 3-kinase (PI3K) p85 $\alpha$ , and glucose transporter (Glut) type 4 [38, 39] as discussed below.

While WAT in HIV and SIV infection is characterized by a marked increase in CD8<sup>+</sup> T cells, the changes in CD4<sup>+</sup> T-cell subsets are less pronounced. WAT CD4<sup>+</sup> T cells harboring latent HIV likely contribute to local inflammation. Co-culture of preadipocytes with CD4<sup>+</sup> T cells containing proviral DNA increases preadipocyte IL-6 expression nearly 3-fold [25]. Release of viral proteins (Vpr or Tat) from infected cells has direct effects on cytokine production [19, 40, 41]. Compared to HIV-uninfected persons with similar BMI, scWAT in PLHIV has a significantly higher proportion of CD4 regulatory T cells (Tregs) identified by cell surface expression of CD25, as well as the transcription factor Foxp3, which could confer a beneficial anti-inflammatory effect. In contrast, there are no major differences in Th1 and Th17 proinflammatory subsets [26] between the 2 groups. However, there are fewer WAT Tregs in obesity, and loss of these cells may facilitate an influx of proinflammatory T cells and macrophages [32]. Thus, both

HIV-specific factors as well as metabolic dysfunction related to obesity may contribute to the degree of tissue inflammation among obese PLHIV.

### **CELLULAR METABOLISM IN MACROPHAGE INFLAMMATORY RESPONSES IN ADIPOSE TISSUE**

The metabolic state of immune cells is linked to their immune cell functions and to inflammatory processes. Immune cell metabolism is altered by HIV viral products. Glucose is metabolized via 2 major pathways: oxidative phosphorylation in the mitochondria producing maximal adenosine triphosphate (ATP), and glycolysis in the cytosol producing less ATP. The key event that marks metabolic reprogramming of lipopolysaccharide (LPS)-stimulated monocytes and macrophages is the overexpression of Glut1, the major glucose transporter that supports an increase in glycolytic influx and a proinflammatory phenotype (Figure 3). LPS-mediated signaling in macrophages initiates a metabolic switch from oxidative phosphorylation to glycolysis [42], producing metabolites necessary for growth and inflammatory responses. In a mouse model, blocking oxidative metabolism increases the number of proinflammatory M1 macrophages [43], and LPS-activated monocytes have increased glycolysis [44]. Glut1, a surrogate indicator of glycolysis, is increased on inflammatory monocytes in PLHIV, regardless of treatment status, and is considered a marker of immune activation and inflammation [44].

In murine models of obesity, WAT macrophages adipose tissue macrophages (ATMs) exhibit high glucose metabolic activity with elevated surface Glut1, and secrete high amounts of proinflammatory cytokines. This link between inflammation and metabolism supports the observed predominance of “metabolically activated” M1-like ATMs in the WAT of obese individuals relative to the anti-inflammatory M2 ATMs, which are more abundant in lean individuals. M2 macrophages are reliant on fatty acid oxidation and oxidative phosphorylation [45]; in the context of HIV infection, metabolic reprogramming of monocytes and macrophages is driven from an oxidative phenotype toward a proinflammatory glycolytic state [46]. A greater understanding of ATM metabolism may provide new therapeutic targets relevant to HIV-related comorbidities.

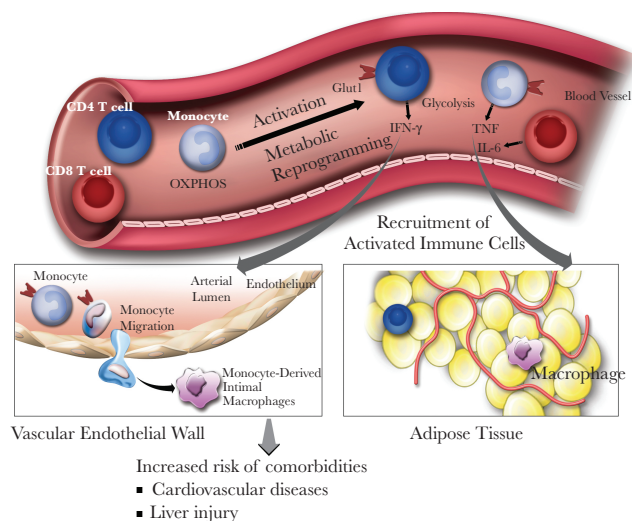
The metabolic programming during immune cell activation is coordinated in part by the PI3K/Akt/mechanistic target of rapamycin (mTOR) axis that posttranslationally regulates Glut1 trafficking to the cell membrane [47]. Normalization of overactive metabolic activity in both blood monocytes and ATM by therapeutic targeting of these pathways presents potential ways to alleviate the combinatorial effects of obesity and HIV. In animal models of obesity, PI3K inhibitors such as CNIO-PI3Ki and GDC-0941 decreased serum glucose levels without toxic effects [48]. Furthermore, mTOR inhibitors such as rapamycin dampen inflammatory responses by reducing inflammatory cytokine production by macrophages [49, 50]. Taken together,

metabolic targeting of immune cells represents a new therapeutic approach to treat metabolic and chronic inflammatory diseases.

It remains to be determined whether HIV itself induces metabolic shifts in immune cells within the adipose environment, but several lines of reasoning point to the possibility. Glut1 is elevated on peripheral monocytes and CD4<sup>+</sup> T cells in PLHIV, including those on suppressive ART [51], and these cells may be recruited to the arterial endothelium and the adipose tissue (Figure 3). Vpr can increase mTOR activity in CD4<sup>+</sup> T cells, which controls cellular metabolism, HIV replication, and latency. This metabolic programming of immune cells initiates a vicious inflammatory cycle where HIV and obesity play important synergistic roles.

### IMMUNOMODULATORY EFFECTS OF ADIPOKINES

Adipokines, hormones produced by adipocytes, have metabolic, neuroendocrine, and immunomodulatory effects. Leptin, a regulator of appetite via hypothalamic receptors, also has immunoregulatory effects. In *in vitro* studies, leptin promotes proinflammatory cytokine expression by macrophages and monocytes and acts directly on hepatocytes to promote C-reactive protein expression. Mature CD4<sup>+</sup> T cells express the long isoform of the leptin receptor [52] through which leptin signals provoke proliferative responses and induce activation



**Figure 3.** Model of how immune cell metabolic programming in human immunodeficiency virus (HIV) infection drives inflammation and may promote comorbidities. Inactivated T cells and monocytes utilize oxidative phosphorylation to generate adenosine triphosphate from fatty acids and limited glucose. During activation, cells undergo metabolic reprogramming toward a proinflammatory glycolytic profile by increasing surface glucose transporter 1 to increase glucose uptake. Metabolically activated monocytes may be recruited to arterial endothelium where they bind and migrate to the intima, differentiate into macrophages, and perpetuate atherosclerosis. Likewise, activated peripheral immune cells may be recruited to adipose tissue to orchestrate an inflammatory environment. Abbreviations: Glut 1, glucose transporter 1; IFN- $\gamma$ , interferon gamma; IL-6, interleukin 6; OXPHOS, oxidative phosphorylation; TNF, tumor necrosis factor.

in antigen-primed T cells and polarizes CD4<sup>+</sup> T cells toward a Th1 phenotype [52–57]. Leptin also increases monocyte, macrophage, and dendritic cell expression of anti-inflammatory cytokines (eg, IL-10 and IL-1 receptor antagonist) and suppresses interferon- $\gamma$  in LPS-stimulated human macrophages [58, 59]. The administration of physiologic quantities of recombinant leptin to HIV-negative adults with acquired or congenital lipodystrophy confers higher circulating CD4<sup>+</sup> and CD8<sup>+</sup> T-cell counts, but 2 small trials in PLHIV with lipodystrophy on ART did not show an increase in CD4<sup>+</sup> T cells.

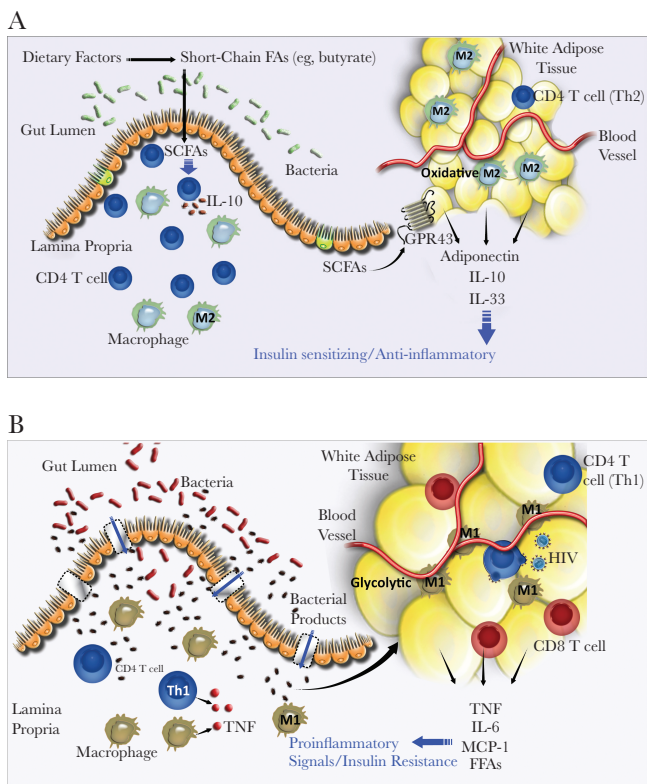
Another adipokine, adiponectin, has insulin-sensitizing effects on several metabolically active tissues, and circulating levels decline in obesity and in PLHIV [60]. Adiponectin exerts anti-inflammatory effects by inhibiting macrophage differentiation and production of TNF- $\alpha$ , reducing adipose tissue endothelial adhesion molecule expression, stimulating the production of IL-10 and IL-1 receptor antagonists, and reducing T-cell proliferation. T cells treated with adiponectin show reduced expansion after antigen stimulation, increased apoptosis, and reduced cytokine production [61]. Total and high-molecular-weight adiponectin have been shown to improve the anti-hepatitis C-specific T-cell responses, suggesting a favorable role in viral immunity [62].

### INTERCELLULAR MEDIATORS: SEX HORMONES

The interaction between sex hormones and immune cells may impact adipose dysfunction in HIV. Estrogen and testosterone have a critical influence on adipose tissue phenotype in the non-HIV population. Hypogonadal states are associated with abdominal fat accumulation and metabolic dysregulation. Sex steroid deprivation among non-HIV-infected men correlates with increases in adipose tissue T cells and macrophage populations [63] with stronger associations of testosterone to T cells and estrogen to macrophages. Lower estrogen and testosterone levels have been demonstrated among men with HIV and lipodystrophy compared to those without lipodystrophy [64]. Estrogen has differential binding capacity to estrogen receptors in the subcutaneous vs visceral depot based on sex and may affect lipolysis through its actions on the estrogen receptor [65]. Emerging data suggest that overexpression of the protein prohibitin in the adipose depot may confer an obese phenotype that is sex neutral. However, the same protein may induce metabolic dysregulation in a sex-dimorphic pattern via cross-talk with sex steroids and immune signaling. Mechanistic investigation of prohibitin may yield further insight into linking sex-specific differences in fat redistribution, chronic low-grade inflammation, and metabolic complications among PLHIV.

### GASTROINTESTINAL TRACT BARRIER BREAKDOWN, DYSBIOSIS, AND ADIPOCYTE INFLAMMATION

The gastrointestinal tract may play an important role in obesity, adipose tissue inflammation, and metabolic disorders (Figure 4).



**Figure 4.** *A*, Gut and white adipose tissue homeostasis in human immunodeficiency virus (HIV)–uninfected lean individuals. Commensal bacteria and microbial products such as lipopolysaccharide (LPS) are restricted to the gut lumen by an intact mucosal barrier. Short-chain fatty acids (SCFAs) produced by “good” bacteria, eg, firmicutes, from the metabolism of complex fibers produce SCFAs such as butyrate, which maintain gut integrity and production of anti-inflammatory cytokines by immune cells within the lamina propria. SCFAs also regulate GPR43 on adipocytes to suppress lipid accumulation. In lean white adipose tissue, Th2 lymphocyte and M2 macrophages predominate, and anti-inflammatory cytokines and insulin-sensitizing adipokines are released. *B*, Model of gut and white adipose tissue homeostasis in obese people living with HIV (PLHIV). HIV causes a breach of intestinal epithelial barrier due to loss of tight junctions. Translocation of commensal bacteria and bacterial products including LPS and metabolites from the gut lumen into the lamina propria ensues. HIV infection depletes lamina propria CD4<sup>+</sup> T cells and, combined with a compromised gut barrier, induces potent proinflammatory gut response. Translocation of microbial products into white adipose tissue and peripheral blood causes systemic and white adipose inflammation that may promote or exacerbate obesity and creates a vicious cycle. In PLHIV, a disordered gut microbiome, characterized by reduced bacterial diversity and a shift from Firmicutes dominating phyla to pathobionts such as Proteobacteria and Bacteroidetes has been described. SCFAs such as propionate and acetate are produced, which have important immunological activity only now being elucidated. Metabolically activated and inflammatory immune cells within obese white adipose tissue secrete chemokines and proinflammatory cytokines, and enlarged adipocytes secrete free fatty acids and adipokines that induce insulin resistance. Activated resident CD4<sup>+</sup> T cells and macrophages within adipose tissues are also targets and reservoirs for HIV. Abbreviations: FA, fatty acid; FFA, free fatty acid; HIV, human immunodeficiency virus; IL, interleukin; MCP-1, Monocyte chemoattractant protein 1; SCFA, short-chain fatty acid; TNF, tumor necrosis factor.

Microbial translocation due to loss of mucosal integrity is a critical driver of adipose tissue inflammation in PLHIV. The intestinal wall is altered early in HIV infection and the alterations persist despite ART. These changes include villous atrophy,

apoptosis of enterocytes, loss of tight junctions, abnormal B-cell function, decreased immunoglobulin A production, and depletion of CD4<sup>+</sup> T cells, especially Th17 cells [14]. Both HIV and obesity are associated with increased intestinal permeability to bacterial LPS. In animal models, LPS triggers gains in visceral adipose tissue and adipose tissue inflammation mediated via LPS’s coreceptor, CD14 [66]. Obesity and HIV are both associated with a disordered intestinal microbiome characterized by a loss of gut microbial diversity and a deleterious metabolome [67]. It is postulated that short-chain fatty acids such as propionate and acetate are directed to regulate lipogenesis and gluconeogenesis in the liver, whereas butyrate, a metabolic product of bacterial digestion of complex carbohydrates, is an important energy source for colonic epithelial cells. These moieties are increasingly recognized as both immunologically and metabolically active and they may have epigenetic effects [68–71]. Their significance in HIV is an active area of research [69–73].

## PREDICTORS OF CLINICAL OUTCOMES

Body mass index ( $\text{kg}/\text{m}^2$ ) is an indirect estimate of body fat based on height and weight and is used to identify obesity [74]. Because adipose tissue preferentially accumulates in visceral organs, and lean body mass is reduced in chronic HIV, BMI may not be an accurate reflection of adiposity-related risk in PLHIV. A measurement of central obesity, or an evaluation of body composition, may better evaluate risk. Waist circumference and calculations that correct for height are not dependent on age, sex, or ethnicity, may be better predictors of cardiometabolic risk than BMI [75]. While body fat composition can be quantified with advanced imaging techniques, such as computed tomography or dual-energy x-ray absorptiometry, they are impractical in most clinical settings. Waist and hip measurements are simple, noninvasive, and inexpensive, and provide a good estimate of central obesity. Surrogate markers, such as serum levels of soluble CD14, and anthropometric measurements (eg, low thigh mass), have predictive values for comorbid risk in PLHIV, but may not add significant value in a heterogeneous population or low-resource settings. For example, while soluble CD163 and serum levels of adipokines were significantly associated with liver fibrosis in PLHIV, obesity remained the strongest predictor of liver fibrosis in multivariable analyses [76].

## METABOLIC CONSEQUENCES OF ART

Clinical trials have assessed the role of ART in the development of obesity. Overall, no convincing differential effect of the nucleoside reverse transcriptase inhibitor or nonnucleoside reverse transcriptase inhibitor (NNRTI) classes has been observed, although recent observational data point to a potential for higher weight gain with tenofovir alafenamide. The role of protease inhibitors (PIs) remains uncertain. While PIs do not generally lead to more total or central obesity than NNRTIs, ritonavir-boosted atazanavir may be an exception with a trend toward

greater gains in central fat observed when compared to NNRTIs and older PIs [77, 78]. However, ritonavir-boosted atazanavir and darunavir had similar effects on visceral adiposity in 2 other studies [79, 80].

Emerging data suggest that integrase inhibitors are associated with increased weight gain. In randomized studies, raltegravir led to similar visceral adipose tissue accumulation when compared to PIs [79], but was associated with larger gains in waist circumference and a higher incidence of severe weight gain through 96 weeks of ART [81, 82]. Observational and cohort studies suggest that integrase inhibitors can lead to excessive gains in body weight, dolutegravir and raltegravir more than elvitegravir [83–86]. In cell culture, elvitegravir has been found to inhibit adipocyte differentiation and the expression of genes controlling adipogenesis. ART clearly interacts with several other factors, including female sex, race, and gut integrity [79, 82, 87] and potentiates the effect of consumption of a high-fat diet on obesity in PLHIV [88].

### TREATMENT STRATEGIES FOR THE MANAGEMENT OF OBESITY AND METABOLIC COMPLICATIONS

Treatments for obesity in HIV may include those used in the general population, as well as more tailored therapeutic strategies (Figure 5). Several groups have studied the treatment of obesity in PLHIV with mixed success. The first randomized trial testing an internet based behavioral weight loss program for PLHIV demonstrated a 4.4 kg average weight loss. However, there was significant variability in outcomes and only 30% of the patients achieved a 5% weight loss in the 12-week study [89]. While diet-induced weight loss improved insulin sensitivity in women with HIV to the same extent as HIV-negative women, weight loss caused a greater decline in fat-free mass in PLHIV. This suggests that the best modalities for weight loss in PLHIV should combine diet with both aerobic exercise and resistance exercise training to preserve fat-free mass. Due to the paucity of evidence, current obesity treatment guidelines for PLHIV [90] do not indicate specific exercise considerations. Recommendations include dietary modifications, both aerobic and resistance exercise training, antiobesity medications, and bariatric surgery when appropriate.

Recent studies have taken advantage of knowledge regarding hormone-mediated physiology to test novel pharmaceutical approaches to fat reduction, related inflammation, and metabolic dysfunction in HIV. In PLHIV, metformin leads to improvements in body weight, waist circumference, and insulin resistance, and prevents the progression of coronary calcium [91, 92]. PLHIV with excess visceral adiposity demonstrate increased renin-angiotensin-aldosterone system activation [93]. Initial studies show that eplerenone, a mineralocorticoid receptor blocker, may have beneficial effects on inflammation, lipids, and ectopic fat depots [94], and telmisartan (a combination angiotensin receptor antagonist and PPAR- $\gamma$  agonist)



**Figure 5.** Selected interventions for managing obesity. Asterisks (\*) indicate those strategies that are literature-based for treatment of human immunodeficiency virus (HIV) obesity as well as obesity without HIV. Abbreviations: AMPK, adenosine monophosphate-activated protein kinase; DASH, Dietary Approaches to Stop Hypertension; DPP-4, Dipeptidyl peptidase-4; GLP-1, Glucagon-like peptide-1; PPAR- $\gamma$ , peroxisome proliferator-activated receptor gamma.

may modestly reduce adiposity in PLHIV [95]. Tesamorelin, a growth hormone-releasing hormone analogue, is US Food and Drug Administration (FDA) approved to reduce visceral adiposity in PLHIV, increases lean mass and is neutral to weight. Another adipose-targeted strategy includes the GLP-1 receptor agonists; liraglutide, FDA approved for obesity management in the non-HIV population, is associated with a mean weight loss of 4–8 kg over 56 weeks [96, 97]. In HIV, sitagliptin, a DPP-4 inhibitor, may have local anti-inflammatory effects on the adipose depot [98]. Detailed studies are needed to assess the benefit of GLP-1 receptor agonists on fat reduction in PLHIV. Medical therapies with dual action to reduce inflammation and adiposity are particularly attractive. Exploratory studies with probiotics/prebiotics such as *Lactobacillus gasseri* strains/galactomannan suggest potential effects in obesity trials [99], perhaps due to effects on short-chain fatty acids. Further studies among PLHIV are necessary before any firm conclusions can be drawn as to clinical utility of these moieties in weight management.

### CONCLUSIONS

Understanding the contributions of HIV and its related proteins to the immunopathogenesis of obesity and related inflammatory and metabolic complications is a critical priority for PLHIV. Although our understanding of the mechanisms and strategies to combat obesity in HIV is increasing, significant controversies and unknowns remain. A stepwise targeted approach is



necessary to evaluate specific molecular mechanisms by which HIV regulates adipogenesis, fibrosis, immune cellular metabolism, and gut integrity and the exact contribution of ongoing or intermittent viral replication. This research may have important implications for understanding the mechanisms of adipose-related mechanisms of inflammation that drive cardiometabolic and noncommunicable disease risk in HIV and may elucidate novel mechanisms regulating these pathways in the general population. Such research will allow us to develop tailored therapeutic strategies to combat the growing epidemic of obesity among PLHIV.

## Notes

**Acknowledgments.** The authors sincerely thank the other members of the convening committee of the HIV and Obesity workshop (Judith S. Currier, Jordan Lake, and Morrie Schambelan) for the opportunity to have these important discussions, as well as colleagues from the National Institutes of Health (NIH): Beverly Alston, Vicki Cargill, Stacy Carrington-Lawrence, Christine Chiou, Karin Klingman, Edward Doo, Peter Perrin, and Sharon Williams. The authors also thank niceconsultants.com for graphic design on all figures.

**Disclaimer.** The contents of this article represent the views of the authors and do not constitute the official position of the NIH or the United States government.

**Financial support.** This publication was supported by the Office of Research in Women's Health, the National Institute of Diabetes and Digestive and Kidney Diseases (NIDDK), and the National Institute of Allergy and Infectious Diseases. J. R. K. is supported by NIDDK (grant number R01DK112262) and the Tennessee Center for AIDS Research (grant number P30AI110527). S. K. is supported by NIDDK (grant number 1R01DK1123) and indirectly by NIDDK-sponsored P30 grant numbers DK098722 (University of California, San Francisco [UCSF] Nutrition and Obesity Research Center) and DK063720 (UCSF Diabetes Research Center). D. L. receives support from NIAID (grant numbers R21 AI116208 and R33 AI116208). J. L., S. S., and S. G. are supported by the NIH (grant numbers R01HL123351, K23 HL136262, and P30 DK040561, respectively). J. T. is supported by an Australian National Health and Medical Research Council Early Career Fellowship. C. P. is supported by the Australian Centre for HIV and Hepatitis Virology Research (ACH2) and a 2010 developmental grant (Creative and Novel Ideas in Research) from the University of Washington Center for AIDS Research, an NIH-funded program (award number AI027757).

**Potential conflicts of interest.** C. A. has served as a consultant for Nutrisystem, Zafgen, Sanofi-Aventis, Orexigen, EnteroMedics, Bariatrix, Xenobiosciences, Rhythm Pharmaceuticals, Eisai, NovoNordisk, GI Dynamics, Gelesis, Takeda; and Scientific Intake; has received research funding from Aspire Bariatrics, Vela Foundation, Energesis, Coherence

Lab, NovoNordisk, GI Dynamics, Gelesis, Takeda, NIH, and PCORI; and had past stock ownership in Science-Smart LLC. J. R. K. has served as a consultant for and receives research funding from Gilead Pharmaceuticals. J. L. has served as a consultant for ViiV Healthcare and has served on the medical affairs advisory board for Gilead Sciences. G. A. M. has served as a consultant for Gilead, GSK/ViiV, and Merck and has received research funding from Roche, Astellas, Tetrphase, Gilead, Merck, and BMS. S. G. has served as a consultant to Theratechnologies Inc. All other authors report no potential conflicts of interest. All authors have submitted the ICMJE Form for Disclosure of Potential Conflicts of Interest. Conflicts that the editors consider relevant to the content of the manuscript have been disclosed.

## References

1. Bares SH, Smeaton LM, Xu A, Godfrey C, McComsey GA. HIV-infected women gain more weight than HIV-infected men following the initiation of antiretroviral therapy. *J Womens Health (Larchmt)* **2018**; 27:1162–9.
2. Kazooba P, Kasamba I, Mayanja BN, et al. Cardiometabolic risk among HIV-POSITIVE Ugandan adults: prevalence, predictors and effect of long-term antiretroviral therapy. *Pan Afr Med J* **2017**; 27:40.
3. Achhra AC, Sabin C, Ryom L, et al. Body mass index and the risk of serious non-aids events and all-cause mortality in treated HIV-positive individuals: D: A: D cohort analysis. *J Acquir Immune Defic Syndr* **2018**; 78:579–88.
4. Herrin M, Tate JP, Akgun KM, et al. Weight gain and incident diabetes among HIV-infected veterans initiating antiretroviral therapy compared with uninfected individuals. *J Acquir Immune Defic Syndr* **2016**; 73:228–36.
5. Alexopoulos N, Katritsis D, Raggi P. Visceral adipose tissue as a source of inflammation and promoter of atherosclerosis. *Atherosclerosis* **2014**; 233:104–12.
6. Divoux A, Tordjman J, Lacasa D, et al. Fibrosis in human adipose tissue: composition, distribution, and link with lipid metabolism and fat mass loss. *Diabetes* **2010**; 59:2817–25.
7. Lackey DE, Burk DH, Ali MR, et al. Contributions of adipose tissue architectural and tensile properties toward defining healthy and unhealthy obesity. *Am J Physiol Endocrinol Metab* **2014**; 306:E233–46.
8. Sun K, Park J, Gupta OT, et al. Endotrophin triggers adipose tissue fibrosis and metabolic dysfunction. *Nat Commun* **2014**; 5:3485.
9. Ikeda K, Maretich P, Kajimura S. The common and distinct features of brown and beige adipocytes. *Trends Endocrinol Metab* **2018**; 29:191–200.
10. Alba DL, Farooq JA, Lin MYC, Schafer AL, Shepherd J, Koliwad SK. Subcutaneous fat fibrosis links obesity to insulin resistance in Chinese Americans. *J Clin Endocrinol Metab* **2018**; 103:3194–204.

11. Hasegawa Y, Ikeda K, Chen Y, et al. Repression of adipose tissue fibrosis through a PRDM16-GTF2IRD1 complex improves systemic glucose homeostasis. *Cell Metab* **2018**; 27:180–94.e6.
12. Khan T, Muise ES, Iyengar P, et al. Metabolic dysregulation and adipose tissue fibrosis: role of collagen VI. *Mol Cell Biol* **2009**; 29:1575–91.
13. Reggio S, Rouault C, Poitou C, et al. Increased basement membrane components in adipose tissue during obesity: links with TGF $\beta$  and metabolic phenotypes. *J Clin Endocrinol Metab* **2016**; 101:2578–87.
14. Sandler NG, Douek DC. Microbial translocation in HIV infection: causes, consequences and treatment opportunities. *Nat Rev Microbiol* **2012**; 10:655–66.
15. Jan V, Cervera P, Maachi M, et al. Altered fat differentiation and adipocytokine expression are inter-related and linked to morphological changes and insulin resistance in HIV-1-infected lipodystrophic patients. *Antivir Ther* **2004**; 9:555–64.
16. Marcelin G, Ferreira A, Liu Y, et al. A PDGFR $\alpha$ -mediated switch toward CD9high adipocyte progenitors controls obesity-induced adipose tissue fibrosis. *Cell Metab* **2017**; 25:673–85.
17. Stanley TL, Grinspoon SK. Body composition and metabolic changes in HIV-infected patients. *J Infect Dis* **2012**; 205(Suppl 3):S383–90.
18. Lo J, Abbara S, Rocha-Filho JA, Shturman L, Wei J, Grinspoon SK. Increased epicardial adipose tissue volume in HIV-infected men and relationships to body composition and metabolic parameters. *AIDS* **2010**; 24:2127–30.
19. Agarwal N, Iyer D, Patel SG, et al. HIV-1 Vpr induces adipose dysfunction in vivo through reciprocal effects on PPAR/GR co-regulation. *Sci Transl Med* **2013**; 5:213ra164.
20. Agarwal N, Iyer D, Gabbi C, et al. HIV-1 viral protein R (Vpr) induces fatty liver in mice via LXR $\alpha$  and PPAR $\alpha$  dysregulation: implications for HIV-specific pathogenesis of NAFLD. *Sci Rep* **2017**; 7:13362.
21. Xu D, Sun L. Role of microRNA biogenesis in adipocyte and lipodystrophy. *Adipocyte* **2015**; 4:222–4.
22. Mori MA, Thomou T, Boucher J, et al. Altered miRNA processing disrupts brown/white adipocyte determination and associates with lipodystrophy. *J Clin Invest* **2014**; 124:3339–51.
23. Torriani M, Srinivasa S, Fitch KV, et al. Dysfunctional subcutaneous fat with reduced dicer and brown adipose tissue gene expression in HIV-infected patients. *J Clin Endocrinol Metab* **2016**; 101:1225–34.
24. Torriani M, Fitch K, Stavrou E, et al. Deiodinase 2 expression is increased in dorsocervical fat of patients with HIV-associated lipohypertrophy syndrome. *J Clin Endocrinol Metab* **2012**; 97:E602–7.
25. Couturier J, Suliburk JW, Brown JM, et al. Human adipose tissue as a reservoir for memory CD4+ T cells and HIV. *AIDS* **2015**; 29:667–74.
26. Damouche A, Pourcher G, Pourcher V, et al. High proportion of PD-1-expressing CD4+ T cells in adipose tissue constitutes an immunomodulatory microenvironment that may support HIV persistence. *Eur J Immunol* **2017**; 47:2113–23.
27. Koethe JR, McDonnell W, Kennedy A, et al. Adipose tissue is enriched for activated and late-differentiated CD8+ T cells and shows distinct CD8+ receptor usage, compared with blood in HIV-infected persons. *J Acquir Immune Defic Syndr* **2018**; 77:e14–21.
28. Farber DL, Yudanin NA, Restifo NP. Human memory T cells: generation, compartmentalization and homeostasis. *Nat Rev Immunol* **2014**; 14:24–35.
29. Focosi D, Bestagno M, Burrone O, Petrini M. CD57+ T lymphocytes and functional immune deficiency. *J Leukoc Biol* **2010**; 87:107–16.
30. Palmer BE, Blyveis N, Fontenot AP, Wilson CC. Functional and phenotypic characterization of CD57+CD4+ T cells and their association with HIV-1-induced T cell dysfunction. *J Immunol* **2005**; 175:8415–23.
31. Nishimura S, Manabe I, Nagasaki M, et al. CD8+ effector T cells contribute to macrophage recruitment and adipose tissue inflammation in obesity. *Nat Med* **2009**; 15:914–20.
32. Feuerer M, Herrero L, Cipolletta D, et al. Lean, but not obese, fat is enriched for a unique population of regulatory T cells that affect metabolic parameters. *Nat Med* **2009**; 15:930–9.
33. Fabbri E, Cella M, McCartney SA, et al. Association between specific adipose tissue CD4+ T-cell populations and insulin resistance in obese individuals. *Gastroenterology* **2013**; 145:366–74.e1–3.
34. Pandolfi JB, Ferraro AA, Sananez I, et al. ATP-induced inflammation drives tissue-resident Th17 cells in metabolically unhealthy obesity. *J Immunol* **2016**; 196:3287–96.
35. Yang H, Youm YH, Vandanmagsar B, et al. Obesity increases the production of proinflammatory mediators from adipose tissue T cells and compromises TCR repertoire diversity: implications for systemic inflammation and insulin resistance. *J Immunol* **2010**; 185:1836–45.
36. Winer S, Chan Y, Paltser G, et al. Normalization of obesity-associated insulin resistance through immunotherapy. *Nat Med* **2009**; 15:921–9.
37. McDonnell WJ, Koethe JR, Mallal SA, et al. High CD8 T-Cell receptor clonality and altered CDR3 properties are associated with elevated isolevuglandins in adipose tissue during diet-induced obesity. *Diabetes* **2018**; 67:2361–76.
38. Lumeng CN, Bodzin JL, Saltiel AR. Obesity induces a phenotypic switch in adipose tissue macrophage polarization. *J Clin Invest* **2007**; 117:175–84.

39. Weisberg SP, McCann D, Desai M, Rosenbaum M, Leibel RL, Ferrante AW Jr. Obesity is associated with macrophage accumulation in adipose tissue. *J Clin Invest* **2003**; 112:1796–808.
40. Shrivastav S, Kino T, Cunningham T, et al. Human immunodeficiency virus (HIV)-1 viral protein R suppresses transcriptional activity of peroxisome proliferator-activated receptor  $\{\gamma\}$  and inhibits adipocyte differentiation: implications for HIV-associated lipodystrophy. *Mol Endocrinol* **2008**; 22:234–47.
41. Díaz-Delfín J, Domingo P, Wabitsch M, Giralt M, Villarroya F. HIV-1 Tat protein impairs adipogenesis and induces the expression and secretion of proinflammatory cytokines in human SGBS adipocytes. *Antivir Ther* **2012**; 17:529–40.
42. Kelly B, O'Neill LA. Metabolic reprogramming in macrophages and dendritic cells in innate immunity. *Cell Res* **2015**; 25:771–84.
43. Galván-Peña S, O'Neill LA. Metabolic reprogramming in macrophage polarization. *Front Immunol* **2014**; 5:420.
44. Palmer CS, Anzinger JJ, Zhou J, et al. Glucose transporter 1-expressing proinflammatory monocytes are elevated in combination antiretroviral therapy-treated and untreated HIV+ subjects. *J Immunol* **2014**; 193:5595–603.
45. Wang F, Zhang S, Vuckovic I, et al. Glycolytic stimulation is not a requirement for M2 macrophage differentiation. *Cell Metab* **2018**; 28:463–75.e4.
46. Damouche A, Lazure T, Avettand-Fènoël V, et al. Adipose tissue is a neglected viral reservoir and an inflammatory site during chronic HIV and SIV infection. *PLoS Pathog* **2015**; 11:e1005153.
47. Palmer CS, Ostrowski M, Balderson B, Christian N, Crowe SM. Glucose metabolism regulates T cell activation, differentiation, and functions. *Front Immunol* **2015**; 6:1.
48. Ortega-Molina A, Lopez-Guadamillas E, Mattison JA, et al. Pharmacological inhibition of PI3K reduces adiposity and metabolic syndrome in obese mice and rhesus monkeys. *Cell Metab* **2015**; 21:558–70.
49. Xie S, Chen M, Yan B, He X, Chen X, Li D. Identification of a role for the PI3K/AKT/mTOR signaling pathway in innate immune cells. *PLoS One* **2014**; 9:e94496.
50. Soliman GA. The role of mechanistic target of rapamycin (mTOR) complexes signaling in the immune responses. *Nutrients* **2013**; 5:2231–57.
51. Palmer CS, Ostrowski M, Gouillou M, et al. Increased glucose metabolic activity is associated with CD4+ T-cell activation and depletion during chronic HIV infection. *AIDS* **2014**; 28:297–309.
52. Lord GM, Matarese G, Howard JK, Baker RJ, Bloom SR, Lechler RI. Leptin modulates the T-cell immune response and reverses starvation-induced immunosuppression. *Nature* **1998**; 394:897–901.
53. Lord GM, Matarese G, Howard JK, Bloom SR, Lechler RI. Leptin inhibits the anti-CD3-driven proliferation of peripheral blood T cells but enhances the production of proinflammatory cytokines. *J Leukoc Biol* **2002**; 72:330–8.
54. Maggi E, Mazzetti M, Ravina A, et al. Ability of HIV to promote a TH1 to TH0 shift and to replicate preferentially in TH2 and TH0 cells. *Science* **1994**; 265:244–8.
55. Mattioli B, Straface E, Quaranta MG, Giordani L, Viora M. Leptin promotes differentiation and survival of human dendritic cells and licenses them for Th1 priming. *J Immunol* **2005**; 174:6820–8.
56. Martín-Romero C, Santos-Alvarez J, Goberna R, Sánchez-Margalet V. Human leptin enhances activation and proliferation of human circulating T lymphocytes. *Cell Immunol* **2000**; 199:15–24.
57. Fernández-Riejos P, Goberna R, Sánchez-Margalet V. Leptin promotes cell survival and activates Jurkat T lymphocytes by stimulation of mitogen-activated protein kinase. *Clin Exp Immunol* **2008**; 151:505–18.
58. Tilg H, Moschen AR. Adipocytokines: mediators linking adipose tissue, inflammation and immunity. *Nat Rev Immunol* **2006**; 6:772–83.
59. Koerner A, Kratzsch J, Kiess W. Adipocytokines: leptin—the classical, resistin—the controversial, adiponectin—the promising, and more to come. *Best Pract Res Clin Endocrinol Metab* **2005**; 19:525–46.
60. Kosmiski LA, Bacchetti P, Kotler DP, et al. Relationship of fat distribution with adipokines in human immunodeficiency virus infection. *J Clin Endocrinol Metab* **2008**; 93:216–24.
61. Wilk S, Scheibenbogen C, Bauer S, et al. Adiponectin is a negative regulator of antigen-activated T cells. *Eur J Immunol* **2011**; 41:2323–32.
62. Palmer C, Hampartzoumian T, Lloyd A, Zekry A. A novel role for adiponectin in regulating the immune responses in chronic hepatitis C virus infection. *Hepatology* **2008**; 48:374–84.
63. Rubinow KB. Estrogens and body weight regulation in men. *Adv Exp Med Biol* **2017**; 1043:285–313.
64. Andersen O, Pedersen SB, Svenstrup B, et al. Circulating sex hormones and gene expression of subcutaneous adipose tissue oestrogen and alpha-adrenergic receptors in HIV-lipodystrophy: implications for fat distribution. *Clin Endocrinol* **2007**; 67:250–8.
65. Pedersen SB, Kristensen K, Hermann PA, Katzenellenbogen JA, Richelsen B. Estrogen controls lipolysis by up-regulating alpha2A-adrenergic receptors directly in human adipose tissue through the estrogen receptor alpha. Implications for the female fat distribution. *J Clin Endocrinol Metab* **2004**; 89:1869–78.
66. Cani PD, Amar J, Iglesias MA, et al. Metabolic endotoxemia initiates obesity and insulin resistance. *Diabetes* **2007**; 56:1761–72.

67. Liu R, Hong J, Xu X, et al. Gut microbiome and serum metabolome alterations in obesity and after weight-loss intervention. *Nat Med* **2017**; 23:859–68.
68. Davis CD. The gut microbiome and its role in obesity. *Nutr Today* **2016**; 51:167–74.
69. Ridaura VK, Faith JJ, Rey FE, et al. Gut microbiota from twins discordant for obesity modulate metabolism in mice. *Science* **2013**; 341:1241214.
70. Qin J, Li Y, Cai Z, et al. A metagenome-wide association study of gut microbiota in type 2 diabetes. *Nature* **2012**; 490:55–60.
71. Le Chatelier E, Nielsen T, Qin J, et al. Richness of human gut microbiome correlates with metabolic markers. *Nature* **2013**; 500:541–6.
72. Dillon SM, Kibbie J, Lee EJ, et al. Low abundance of colonic butyrate-producing bacteria in HIV infection is associated with microbial translocation and immune activation. *AIDS* **2017**; 31:511–21.
73. Ley RE, Turnbaugh PJ, Klein S, Gordon JI. Microbial ecology: human gut microbes associated with obesity. *Nature* **2006**; 444:1022–3.
74. Janssen I, Katzmarzyk PT, Ross R, et al. Fitness alters the associations of BMI and waist circumference with total and abdominal fat. *Obes Res* **2004**; 12:525–37.
75. Dimala CA, Ngu RC, Kadia BM, Tianyi FL, Choukem SP. Markers of adiposity in HIV/AIDS patients: agreement between waist circumference, waist-to-hip ratio, waist-to-height ratio and body mass index. *PLoS One* **2018**; 13:e0194653.
76. Lemoine M, Lacombe K, Bastard JP, et al. Metabolic syndrome and obesity are the cornerstones of liver fibrosis in HIV-monoinfected patients. *AIDS* **2017**; 31:1955–64.
77. McComsey GA, Kitch D, Sax PE, et al. Peripheral and central fat changes in subjects randomized to abacavir-lamivudine or tenofovir-emtricitabine with atazanavir-ritonavir or efavirenz: ACTG Study A5224s. *Clin Infect Dis* **2011**; 53:185–96.
78. Vrouenraets SM, Wit FW, Fernandez Garcia E, et al; BASIC Study Group. Randomized comparison of metabolic and renal effects of saquinavir/r or atazanavir/r plus tenofovir/emtricitabine in treatment-naïve HIV-1-infected patients. *HIV Med* **2011**; 12:620–31.
79. McComsey GA, Moser C, Currier J, et al. Body composition changes after initiation of raltegravir or protease inhibitors: ACTG A5260s. *Clin Infect Dis* **2016**; 62:853–62.
80. Martinez E, Gonzalez-Cordon A, Ferrer E, et al; ATADAR Study Group. Differential body composition effects of protease inhibitors recommended for initial treatment of HIV infection: a randomized clinical trial. *Clin Infect Dis* **2015**; 60:811–20.
81. Bhagwat P, Ofotokun I, McComsey GA, et al. Changes in abdominal fat following antiretroviral therapy initiation in HIV-infected individuals correlate with waist circumference and self-reported changes. *Antivir Ther* **2017**; 22:577–86.
82. Bhagwat P, Ofotokun I, McComsey GA, et al. Predictors of severe weight/body mass index gain following antiretroviral initiation. In: Conference on Retroviruses and Opportunistic Infections, Seattle, WA, 13–16 February 2017.
83. Bourgi K, Koethe JR, et al. Greater weight gain among treatment-naïve persons starting integrase inhibitors. In: Conference on Retroviruses and Opportunistic Infections, Seattle, WA, 4–7 March 2019.
84. Lake J, et al. Risk factors for excess weight gain following switch to integrase inhibitor-based art. In: Conference on Retroviruses and Opportunistic Infections, Seattle, WA, 4–7 March 2019.
85. Norwood J, Turner M, Bofill C, et al. Brief report: weight gain in persons with HIV switched from efavirenz-based to integrase strand transfer inhibitor-based regimens. *J Acquir Immune Defic Syndr* **2017**; 76:527–31.
86. Bakal DR, Coelho LE, Luz PM, et al. Obesity following ART initiation is common and influenced by both traditional and HIV-/ART-specific risk factors. *J Antimicrob Chemother* **2018**; 73:2177–85.
87. El Kamari V, Moser C, Hileman CO, et al. Lower pretreatment gut integrity is independently associated with fat gain on antiretroviral therapy [manuscript published online ahead of print 23 August 2018]. *Clin Infect Dis* **2018**. doi:10.1093/cid/ciy716.
88. Pepin ME, Padgett LE, McDowell RE, et al. Antiretroviral therapy potentiates high-fat diet induced obesity and glucose intolerance. *Mol Metab* **2018**; 12:48–61.
89. Becofsky K, Wing EJ, McCaffery J, Boudreau M, Wing RR. A randomized controlled trial of a behavioral weight loss program for human immunodeficiency virus-infected patients. *Clin Infect Dis* **2017**; 65:154–7.
90. Lake JE, Stanley TL, Apovian CM, et al. Practical review of recognition and management of obesity and lipohypertrophy in human immunodeficiency virus infection. *Clin Infect Dis* **2017**; 64:1422–9.
91. Hadigan C, Rabe J, Grinspoon S. Sustained benefits of metformin therapy on markers of cardiovascular risk in human immunodeficiency virus-infected patients with fat redistribution and insulin resistance. *J Clin Endocrinol Metab* **2002**; 87:4611–5.
92. Fitch K, Abbara S, Lee H, et al. Effects of lifestyle modification and metformin on atherosclerotic indices among HIV-infected patients with the metabolic syndrome. *AIDS* **2012**; 26:587–97.
93. Srinivasa S, Fitch KV, Wong K, et al. RAAS activation is associated with visceral adiposity and insulin resistance among HIV-infected patients. *J Clin Endocrinol Metab* **2015**; 100:2873–82.
94. Srinivasa S, Fitch KV, Wong K, et al. Randomized, placebo-controlled trial to evaluate effects of eplerenone on metabolic

- and inflammatory indices in HIV. *J Clin Endocrinol Metab* **2018**; 103:2376–84.
95. Lake JE, Tseng CH, Currier JS. A pilot study of telmisartan for visceral adiposity in HIV infection: the metabolic abnormalities, telmisartan, and HIV infection (MATH) trial. *PLoS One* **2013**; 8:e58135.
96. Astrup A, Rossner S, Van Gaal L, et al. Effects of liraglutide in the treatment of obesity: a randomised, double-blind, placebo-controlled study. *Lancet* **2009**; 374:1606–16.
97. Pi-Sunyer X, Astrup A, Fujioka K, et al; SCALE Obesity and Prediabetes NN8022-1839 Study Group. A randomized, controlled trial of 3.0 mg of liraglutide in weight management. *N Engl J Med* **2015**; 373:11–22.
98. Best C, Struthers H, Laciny E, Royal M, Reeds DN, Yarasheski KE. Sitagliptin reduces inflammation and chronic immune cell activation in HIV+ adults with impaired glucose tolerance. *J Clin Endocrinol Metab* **2015**; 100:2621–9.
99. Ferrarese R, Ceresola ER, Preti A, Canducci F. Probiotics, prebiotics and synbiotics for weight loss and metabolic syndrome in the microbiome era. *Eur Rev Med Pharmacol Sci* **2018**; 22:7588–605.