



Data Services without a Data Librarian

Sarah Drerup
STEM Librarian





Intro/History/Background

UofL?

Why data?

No funding for a Data Librarian



Where to Begin?

- Connect With Organizations Already Providing Data Management Services On Your Campus
- Develop a comprehensive LibGuide
- Create Infographics, videos, online learning modules, and other products



Connect with organizations providing data management services on your campus

- Office of Research
- IT Centers
- Research Laboratories
- Departments with disciplines related to life science, physical science, humanities, social science, health science, and engineering



Develop a LibGuide

At the University of Louisville we included the following sections in our Data Management LibGuide:

Benefits of Data Management – Stress the key points of why data management is important: reusability, reproducibility, repeatability, and to meet funding requirements

Data Management Plan (DMP) – Provide details about the components of a DMP, which funding organizations require DMP's, and include examples and online tools

Metadata – Metadata is often a component required in DMP's and a section should be devoted to explaining the importance of metadata with links to different schemas and standards



Sections of LibGuide Continued

Preservation and Data Repositories – Provide file management tools and examples of subject specific and well regarded Data Repositories

Data Storage and Backup – Emphasize security and sustainability in data storage and backups

Citing Data Sets – Citing data sets is as important as citing any other source of information and citation elements and references are helpful tools for researchers

Resources – Many institutions including ALA, MIT, Southeastern Universities Research Association, DataONE, and the UK Data Archive have developed free online resources for researchers and librarians to learn more about data management and they can be compiled in a helpful resources section

William F. Ekstrom Library

[University of Louisville](#) / [UofL Libraries](#) / [Ekstrom Library](#) / [Data Management](#)

Data Management: Resources

Home | Data Management Plans | Metadata | Preservation | Data Repositories | Data Storage & Backup | Citing Data Sets | Resources

Guidance For Graduate Students

UofL Resources for Research & Data Management

- [Office of the Executive Vice President for Research and Innovation](#)
- [Office of Research Policies and Procedures](#)
- [Human Subjects Protection Program](#)
- [Enterprise Security](#)
A branch of the UofL IT department that deals with information security for UofL faculty, staff, and students.
- [Cardinal Research Cluster](#)

Data Management Resources

- [MIT Libraries - Data Management and Publishing](#)
Some information on this LibGuide was provided by MIT Libraries Data Management and Publishing, which operates under a Creative Commons Attribution-ShareAlike 3.0 Unported license.
- [California Digital Library - Data Planning Checklist](#)
- [ICPSR Data Management & Curation](#)
The Interuniversity Consortium for Political and Social Research details how ICPSR assists in the preservation and storage of data, as well as general notes for data management.
- [PURR DMP Self-Assessment Tool](#)
This brief document can be used to help you assess the your data management plan's content.
Purdue University Libraries. "Data Management Plan Self-Assessment Questionnaire." Purdue University, West Lafayette IN. 2/4/11
- [Data Curation Profiles Toolkit](#)
Created by UIUC and Purdue University Libraries, these profiles provide guidelines to help researchers and librarians/IT professionals think through the data management process.
- [Association of Southeastern Research Libraries - Southeastern Universities Research Association](#)

Data Management LibGuide

Currently Undergoing Renovations – Potentially moving towards Management and Discovery of Research Data

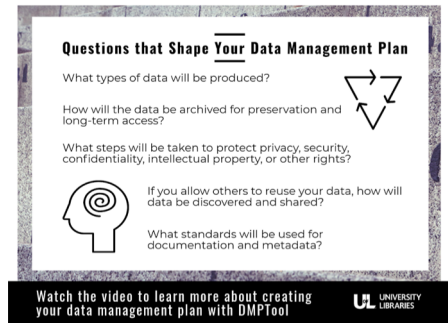
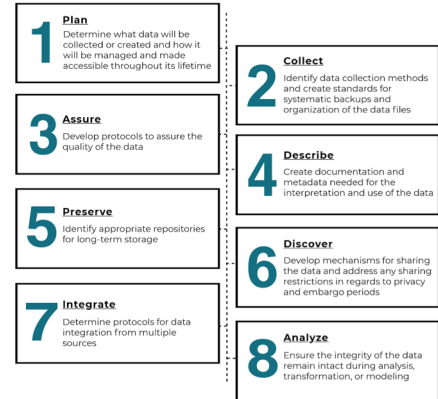


Create products that further the data literacy movement at your institution

Example of an Infographic developed using the free service Piktochart (piktochart.com) to explain the importance of Data Management. This infographic was developed for a website created by the Ekstrom Library's Online Learning Team.



Data Management Considerations During the Data Life Cycle





Next Steps

Funded position or shared position between Ekstrom Library and Kornhauser Library

All research librarians have a basic understanding of data repositories in their subject areas and ability to do a basic data interview and direct to appropriate expertise.

Develop online training modules around Data Management and Discovery